



HEBEI JIKE TRADE CO.,LTD
ZHONGKE INDUSTRIAL PRODUCTS CO.,LTD
ADD:BAONENG CENTER,SHIJIAZHUANG,HEBEI,CHINA 050800
TEL/WECHAT/WHATSAPP:+86-15831931141 +86-19930751141
Email: janeliu@qualitywiremesh.com Web: www.qualitywiremesh.com

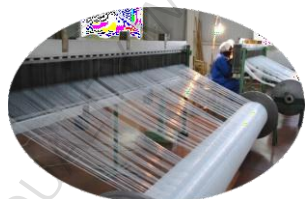
Manufacture Process



1、原材料/Yarn



2、整经/Warping



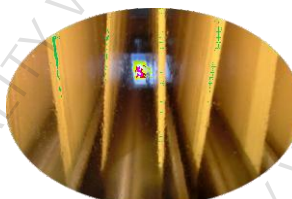
3、穿综/Drawing In Heddle



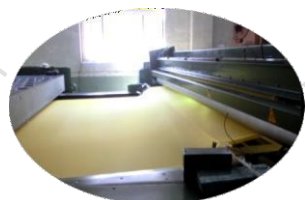
4、穿箱Drawing In Reed



5、织造Weaving



6、水洗Washing



7、热定型Heat Setting Treatment



8、成品检验Product Inspection



9、Product/成品



HEBEI JIKE TRADE CO.,LTD
ZHONGKE INDUSTRIAL PRODUCTS CO.,LTD
ADD:BAONENG CENTER,SHIJIAZHUANG,HEBEI,CHINA 050800
TEL/WECHAT/WHATSAPP:+86-15831931141 +86-19930751141
Email:janeliu@qualitywiremesh.com Web: www.qualitywiremesh.com

Printing Mesh Application



Ceramic Printing



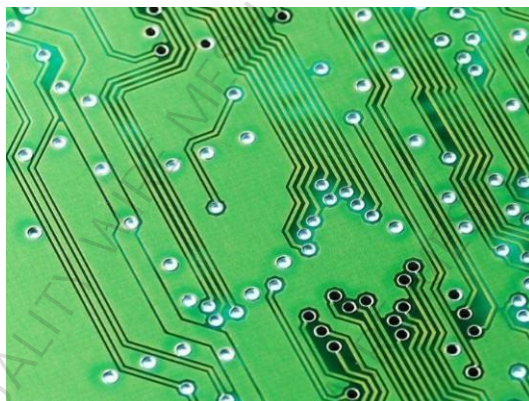
Glass Printing



Textile Printing



Electronic Components Printing



PCB Printing



Solar Printing



Touch Printing



HEBEI JIKE TRADE CO.,LTD
ZHONGKE INDUSTRIAL PRODUCTS CO.,LTD
ADD:BAONENG CENTER,SHIJIAZHUANG,HEBEI,CHINA 050800
TEL/WECHAT/WHATSAPP:+86-15831931141 +86-19930751141
Email: janeliu@qualitywiremesh.com Web: www.qualitywiremesh.com

Polyester(Nylon) Screen Printing Mesh





HEBEI JIKE TRADE CO.,LTD

ZHONGKE INDUSTRIAL PRODUCTS CO.,LTD

ADD:BAONENG CENTER,SHIJIAZHUANG,HEBEI,CHINA 050800

TEL/WECHAT/WHATSAPP:+86-15831931141 +86-19930751141

Email: janeliu@qualitywiremesh.com Web: www.qualitywiremesh.com

Polyester(Nylon) Screen Printing Mesh

Mesh Count Diameter (Mesh/cm um)	Mesh Count (Mesh/inch)	Weave	Aperture (um)	Thread Diameter (um)	Opening (%)	Thickness (um)	Thickness Tolerance (+/-um)	Theoretical Ink (cm3/m2)	Weight (g/m2)	Tension value (N/CM)
165 -31PW (S)	420	1:01	23	31	15	48	2	7	36	25 -26
150 -34PW (T)	380	1:01	23	34	13	55	3	6.5	42	30 -31
150 -31PW (S)	380	1:01	32	31	23	49	3	11	32	24 -25
140 -34TW (T)	355	2:01	33	34	21	56	3	12	41	27 -28
140 -34PW (T)	355	1:01	31	34	20	53	3	10	39	26 -28
140 -31PW (S)	355	1:01	36	31	26	48	2	12	30	22 -24
130 -34PW (T)	330	1:01	40	34	27	55	3	15	37	27 -28
120 -40PW (HD)	305	1:01	37	40	20	63	3	13	44	33 -35
120 -34PW (T)	305	1:01	45	34	30	55	3	16	35	25 -26
120 -31PW (S)	305	1:01	49	31	35	49	3	17	26	20 -23
110 -40PW (HD)	280	1:01	48	40	27	64	3	17	40	30 -32
100 -40PW (T)	255	1:01	58	40	33	63	3	21	37	26 -27
90 -48PW (T)	230	1:01	56	48	25	78	4	19	50	34 -35
80 -48PW (T)	200	1:01	72	48	33	74	4	25	56	34 -35
77 -55PW (T)	195	1:01	67	55	27	88	4	24	55	37 -38
77 -48PW (S)	195	1:01	77	48	35	80	4	28	42	34 -35
72 -55PW (T)	182	1:01	85	55	30	90	5	27	51	33 -34
72 -48PW (S)	182	1:01	90	48	36	78	5	33	39	32 -33
68 -64PW (T)	175	1:01	78	64	28	105	5	30	65	39 -40
68 -55PW (S)	175	1:01	85	55	34	85	4	28	48	33 -34
64 -64PW (T)	160	1:01	85	64	30	115	6	34	61	34 -35
64 -55PW (S)	160	1:01	98	55	38	98	5	36	48	33 -34
61 -64PW (T)	155	1:01	90	64	31	101	5	30	58	35 -36
54 -70PW (HD)	137	1:01	109	70	35	116	6	40	62	39 -40
54 -64PW (T)	137	1:01	115	64	39	100	5	39	51	33 -34
53 -55PW (S)	135	1:01	133	55	50	86	6	42	40	26 -27
53 -45PW (S)	135	2:02	143	45*2	57	79	7	41	46	26 -27
48 -70PW (T)	122	1:01	133	70	41	115	6	47	55	34 -35
47 -55PW (S)	120	1:01	152	55	51	88	6	48	34	26 -27
43 -80PW (T)	110	1:01	149	80	41	130	7	53	64	43 -44
40 -80PW (T)	103	1:01	166	80	44	133	7	59	60	41 -42
39 -55PW (S)	100	1:01	177	55	56	88	6	55	30	39 -40
36 -90PW (T)	92	1:01	183	90	44	150	8	65	68	36 -39
32 -100PW (T)	81	1:01	212	100	45	165	8	73	75	35 -37
32 -64PW (S)	81	1:01	248	64	63	95	6	56	32	26 -28
32 -55PW (S)	81	1:01	257	55	67	103	6	67	28	24 -25
28 -140PW (SL)	70	1:01	217	140	40	195	13	76	125	/
24 -100PW (T)	60	1:01	316	100	57	136	11	65	81	/
21 -150PW (SL)	55	1:01	326	150	46	260	14	118	121	/
21 -80PW (S)	55	1:01	296	80	69	120	9	79	35	/
13 -150PW (SL)	33	1:01	619	150	64	300	14	128	60	/

PW: TW: SL; S, T, HD PW: (Plain Weave);TW:(Twill Weave);

S, T, HD:(thickness of Mesh) Standard Color: white and yellow, other colors on request.